

# Rhinocem

## Water Repellent Cement Paint



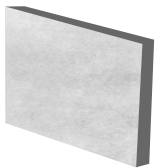
Rhinocem is an economical white cement based coating that provides a water repellent & decorative finish. It is supplied in powder form and requires only addition of water to provide extremely cost effective decoration.

### PRODUCT BENEFITS

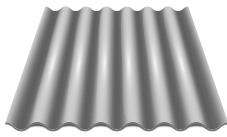


### PRODUCT FEATURES

#### AREAS OF APPLICATION



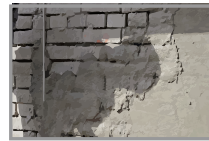
Cement Plaster



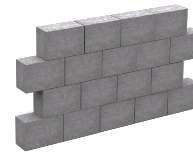
Asbestos Cement Sheets



Pebble Dash



Cement Sand Renderings



Concrete Bricks and RCC



Stucco Surfaces

#### PACKAGING AVAILABLE

Shelf Life: 3 years from date of manufacturing in original tightly closed bags away from dampness, direct sunlight and excess heat.



20 Kg.

#### FINISH

MATT ✓

SMOOTH ✓

#### COVERAGE

On normal masonry surface by brushing



3.30 – 4.40  
sq. mtr. / kg. / 2coat\*

\*Actual coverage may vary from the quoted coverage due to factors such as method and conditions of application, surface roughness and porosity.

#### COLOURS AVAILABLE



\*Currently available in more than 25 shades as per the Rhinocem Shade Card.

### HOW TO APPLY

#### SURFACE PREPARATION:





- All surfaces must be sound, clean, dry and free from any material which may impair adhesion.
- Surface cracks and damage must be repaired suitably. Any faults in the structure, particularly those which may lead to moisture penetration must be rectified.
- All Algae / Fungus / Efflorescence infected areas should be suitably rectified.
- Absorbent surface should be primed with our Acro prime (base coat for cement paint).

#### MIXING:

- Loosen the contents of the bag by rolling and shaking before use. In a clean container, mix two parts of Rhinocem with one part of clean / potable water.
- Mix well either with hand or with the wooden stick to achieve a smooth Paste.
- Add another part of water and stir well to produce a paintable solution.
- Mix no more material than which could be applied within one and half hours.

**APPLICATION:** • It is essential that the first coat of Rhinocem paint is scrubbed well into the surface with a small 4 inches brush. • Apply the second coat after an interval of 8-10 hrs. of the water curing & setting of the first coat. • Generally, two coats of Rhinocem are sufficient.

## PAINT APPLICATION PROCESS

APPLICATION	THINNER	NUMBER OF COATS	RECOATING PERIOD
STEP 1 PRE-WETTING PRE WET THE SURFACE WITH THE CLEAN WATER	 WATER	-	(WAIT FOR 30 MINUTES)
STEP 2 FIRST COAT RHINOCEM BRUSH / ROLLER / SPRAY	 WATER	1 COAT	8 - 10 Hrs.
STEP 3 WETTING WITH WATER	 WATER	-	(WAIT FOR 30 MINUTES)
STEP 4 SECOND COAT RHINOCEM BRUSH / ROLLER / SPRAY	 WATER	1 COAT	8 - 10 Hrs.
WETTING WITH WATER	-	-	TWICE A DAY FOR AT LEAST 2-3 DAYS

1. Recoating period is quoted for 25°C and 50% Relative Humidity, these may vary under different conditions.
2. Some shades may require 3 or more coats for proper hiding.

## POST PAINTING CARE

Curing with a fine spray of clean water is necessary before the painting and at least 8-12 hours of painting / over-night. After the final coat, curing should be done 2-3 times a day with clean potable water for 2-3 days depending on the weather conditions.

## PRECAUTIONS

- ❖ Not to be applied on Gypsum plaster, lime wash or Alkyd paints.
- ❖ Not to be applied in rain or temperature above 40 degree and below 5 degree or if exposure to these conditions is likely during setting and curing.

## SAFETY FEATURES

- ❖ Kindly refer to the MSDS for Rhinocem which gives detailed information on safety measures while handling the paint.
- ❖ Store the container with the lid tightly closed in an upright position, in a cool, dry place.
- ❖ Keep out of reach of children and away from food, drink etc.
- ❖ May be harmful, if swallowed. In case of ingestion, seek immediate medical attention.
- ❖ Wear eye protection during application. In case of contact with eyes, rinse immediately with plenty of water and seek medical advice.
- ❖ In case of skin contact immediately wash skin with soap and plenty of water. Get medical attention if irritation develops or persists.
- ❖ Do not breathe vapour or spray. It is recommended to wear suitable nose pad during sanding and surface preparation to avoid dust inhalation.
- ❖ Do not pour leftover paint down the drain or in water courses.
- ❖ In the event of spills, contain spillage using sand or earth.
- ❖ Safety Data Sheet available for professional user on request.
- ❖ No added Lead, Mercury or Chromium compounds.