

# Acroshield Active

## Exterior Emulsion



ACROSHIELD ACTIVE is a water thinnable exterior wall coating which gives excellent performance in dry or moderately humid climatic conditions. It is an ideal substitute for ordinary paints and requires no water curing. Light fastness of shades is satisfactory under normal exposure conditions.

### PRODUCT BENEFITS



### PRODUCT FEATURES

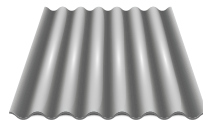
#### AREAS OF APPLICATION



Cement Plaster



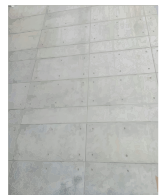
Concrete Bricks



Asbestos



Cement Sand Renderings



RCC Works

#### PACKAGING AVAILABLE



Shelf Life: 3 years from date of manufacturing in original tightly closed containers away from direct sunlight and excess heat.

#### FINISH

SMOOTH ✓

MATT ✓

#### COVERAGE

On normal masonry surface by brushing



**1 COAT**  
12 - 14 sq. mtr./ltr.\*



**2 COATS**  
6 - 7 sq. mtr./ltr.\*

\*Actual Coverage will vary according to the porosity and texture of the surface. However, on moderately smooth surface

#### COLOURS AVAILABLE

1000+\*



\*Currently available in more than 1000 shades as per the Acro Paints Shade Card & Ezytint Fandek.

### HOW TO APPLY



**CLEANING:** Surface should be free from loose paint, dirt, dust or grease etc. Any previous growth of fungus algae or moss need to be properly cleaned with Acro Bioclean followed by wire brush and cleaning with water.

**FILLING:** All surface cracks upto 5 mm to be filled & levelled with Acro Crackseal Paste, while surface cracks more than 5 mm and upto 12 mm should be filled with cement and sand in the ratio of 1:3. Apply 2 coats of Acro Wallguard cement putty to smoothen the surface.

**PRIMER:** Freshly plastered surfaces must be allowed to mature for 6-8 weeks. On such surfaces, apply one coat of Acroprime exterior wall primer by diluting 1 litre primer with 1 litre of tap water. Allow it to dry for 4-6 hours as per the weather conditions.



**TOP COAT:** Apply 2-3 coats of Acroshield Active by diluting 1 litre of Acroshield Active with 700ml. of tap water. Interval of 4-6 hours should be given between two coats. 3 coats are recommended on ledges, parapets and other horizontal surfaces. 3 coats are also recommended for dark shades.

## PAINT APPLICATION PROCESS

APPLICATION	THINNER	DILUTION % (BY VOLUME)	APPLICATION <sup>1</sup> VISCOSITY(SEC)	RECOATING PERIOD <sup>2</sup> (HOURS)
STEP 1 ACRO WALLGUARD PUTTY (OPTIONAL)	 WATER	BASED ON REQUIREMENT TO FORM PASTE	PASTE FORM	4 HRS
STEP 2 ACROPRIME EXTERIOR WALL PRIMER BRUSH / ROLLER / SPRAY	 WATER	BRUSH 90 - 110 ROLLER 90 - 110 SPRAY 40 - 45	BRUSH 15 - 18 SPRAY 33	4 HRS

HORIZONTAL SURFACES LIKE TOP OF WINDOWS, LEDGES SHOULD BE PAINTED WITH 3 COATS OF ACROSHIELD ACTIVE FOR GREATER PROTECTION

### APPLICATION OF PRIMER IS MANDATORY

STEP 3 FIRST COAT ACROSHIELD ACTIVE EXTERIOR EMULSION PAINT BRUSH / ROLLER / SPRAY	 WATER	BRUSH 65 - 70 ROLLER 70 SPRAY 75	BRUSH 20 - 25 SPRAY 20 - 25	4 - 6 HRS
STEP 4 SECOND COAT ACROSHIELD ACTIVE EXTERIOR EMULSION PAINT BRUSH / ROLLER / SPRAY	 WATER	BRUSH 65 - 70 ROLLER 70 SPRAY 75	BRUSH 20 - 25 SPRAY 20 - 25	4 - 6 HRS

1. As measured through a Ford cup.

2. Recoating period is quoted for 25°C and 50% Relative Humidity, these may vary under different conditions.

3. Some shades may require 3 or more coats for proper hiding.

## POST PAINTING CARE

For the best performance of the paint, ensure proper washing and cleaning of all algal and fungal growth, if any, at regular intervals of six months.

## TECHNICAL DETAILS

**a. Drying time :** Surface dry time 30 min.

**b. Flash point IS101/1987 Part 1, Sec 6:** NA

**c. Stability of thinned paint:** To be used within 24 hours

## PRECAUTIONS

- ❖ Do not apply when ambient temperature is less than 10° C or if the temperature might drop to this level within 4 hours of application.
- ❖ In high humidity areas, use of bio-wash solution is recommended to remove surface fungus growth, fungal spores, mould etc. before application of paint.
- ❖ Tinted paints need thorough shaking and mixing immediately after tinter addition as well as before use.
- ❖ Do not thin the paint before addition of Universal Stainer for customized shades. Do not add more than 5% of Universal Stainer.

## SAFETY FEATURES

- ❖ Kindly refer to the MSDS for Acroshield ACTIVE Exterior Emulsion Paint which gives detailed information on safety measures while handling the paint.
- ❖ Store the container with the lid tightly closed in an upright position, in a cool, dry place.
- ❖ Keep out of reach of children and away from food, drink etc.
- ❖ May be harmful, if swallowed. In case of ingestion, seek immediate medical attention.
- ❖ Wear eye protection during application. In case of contact with eyes, rinse immediately with plenty of water and seek medical advice.
- ❖ In case of skin contact immediately wash skin with soap and plenty of water. Get medical attention if irritation develops or persists.
- ❖ Do not breathe vapour or spray. It is recommended to wear suitable nose pad during sanding and surface preparation to avoid dust inhalation.
- ❖ Do not pour leftover paint down the drain or in water courses.
- ❖ In the event of spills, contain spillage using sand or earth.
- ❖ Safety Data Sheet available for professional user on request.
- ❖ No added Lead, Mercury or Chromium compounds.