

Acroprime

White Primer Solvent Thinnable

 **acro paints**



Acroprime Cement Primer Solvent Thinnable is an economical primer for interior use. It has good adhesion and sealing properties. It can be used on matured plastered walls, concrete, asbestos cement sheets, brick-work etc.

PRODUCT BENEFITS



PRODUCT FEATURES

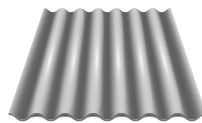
AREAS OF APPLICATION



Cement Plaster



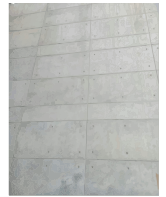
Concrete Bricks



Asbestos

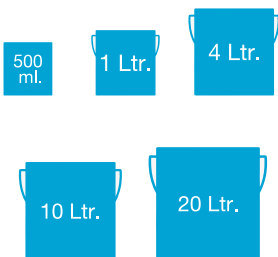


Cement Sand Renderings



RCC Works

PACKAGING AVAILABLE



Shelf Life: 3 years from date of manufacturing in original tightly closed containers away from direct sunlight and excess heat.

COVERAGE

On normal masonry surface by brushing



12 - 15
sq. mtr./ltr./coat*

*Actual Coverage will vary according to the porosity and texture of the surface. However, on moderately smooth surface

FINISH

SMOOTH ✓

MATT ✓

COLOURS AVAILABLE

White*




*Acroprime White Primer Solvent Thinnable is an undercoat

HOW TO APPLY

SURFACE PREPARATION: Surface to be painted should be free from dust, dirt, loose matter, oil, grease, etc. Prepare the surface by sanding with emery paper 180 and wipe clean.

APPLICATION: Apply a coat of Acroprime Primer and allow to dry overnight. Additional coat may be applied as per requirement. Primer may be diluted, by 20% with pure mineral turpentine oil, if required. Acroprime Primer can be applied by brush or spray.

PAINT APPLICATION PROCESS

APPLICATION	THINNER	DILUTION % (BY VOLUME)	APPLICATION ¹ VISCOSITY(SEC)	RECOATING PERIOD ² (HOURS)
STEP 1 SANDING SAND LIGHTLY WITH SAND PAPER 180 AND WIPE CLEAN				
STEP 2 RHINO ACRYLIC WALL PUTTY PUTTY KNIFE	 WATER	BASED ON REQUIREMENT	PASTE	4 - 6 Hrs.
STEP 3 SANDING SAND LIGHTLY WITH SAND PAPER 180 AND WIPE CLEAN				
STEP 4 FIRST COAT ACROPRIME WHITE PRIMER SOLVENT THINNABLE BRUSH / ROLLER / SPRAY	 MTO	BRUSH 8 - 10 SPRAY 13 - 15	BRUSH 30 - 40 SPRAY 20 - 25	6 - 8 Hrs.
STEP 5 SECOND COAT ACROPRIME WHITE PRIMER SOLVENT THINNABLE BRUSH / ROLLER / SPRAY	 MTO	BRUSH 8 - 10 SPRAY 13 - 15	BRUSH 30 - 40 SPRAY 20 - 25	6 - 8 Hrs.

1. As measured through a Ford cup.

2. Recoating period is quoted for 25°C and 50% Relative Humidity, these may vary under different conditions.

POST PAINTING CARE

For the best performance of the paint, ensure proper washing and cleaning of all algal and fungal growth, if any, at regular intervals of six months.

TECHNICAL DETAILS

a. Drying time : Surface dry time 30 min.

b. Flash point IS101/1987 Part 1, Sec 6: 35° C [95° F]

c. Stability of thinned paint: To be used within 24 hours

PRECAUTIONS

Keep away from heat & flame. Close the container properly after use. Wash the equipment with mineral turpentine oil immediately after use.

SAFETY FEATURES

- ❖ Kindly refer to the MSDS for Acroprimer White Primer Solvent Thinnable which gives detailed information on safety measures while handling the paint.
- ❖ Store the container with the lid tightly closed in an upright position, in a cool, dry place.
- ❖ Keep out of reach of children and away from food, drink etc.
- ❖ May be harmful, if swallowed. In case of ingestion, seek immediate medical attention.
- ❖ Wear eye protection during application. In case of contact with eyes, rinse immediately with plenty of water and seek medical advice.
- ❖ In case of skin contact immediately wash skin with soap and plenty of water. Get medical attention if irritation develops or persists.
- ❖ Do not breathe vapour or spray. It is recommended to wear suitable nose pad during sanding and surface preparation to avoid dust inhalation.
- ❖ Do not pour leftover paint down the drain or in water courses.
- ❖ In the event of spills, contain spillage using sand or earth.
- ❖ Safety Data Sheet available for professional user on request.
- ❖ No added Lead, Mercury or Chromium compounds.