

Acroprime

Primer and Sealer - Water Thinnable
For Exteriors & Interiors

 **acro paints**



Acroprime primer and sealer for interiors and exteriors is easily brushable and has excellent alkali resistance has excellent bonding strength and hiding power that performs dual function of adhesion to surface as well as intercoat adhesion. It's suitable as priming coat for new as well as old concrete surface.

PRODUCT BENEFITS



PRODUCT FEATURES

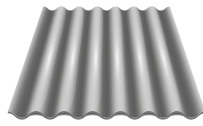
AREAS OF APPLICATION



Cement Plaster



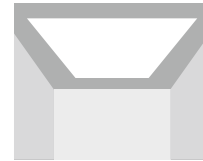
Concrete Bricks



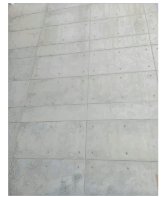
Asbestos



Cement Sand Renderings



Ceiling



RCC Works

PACKAGING AVAILABLE



Shelf Life: 3 years from date of manufacturing in original tightly closed containers away from direct sunlight and excess heat.

FINISH

SMOOTH 

MATT 

COVERAGE

On normal masonry surface by
Brush / Roller / Spray



11-13
sq. mtr. / Ltr. / Coat*

*Actual Coverage will vary according to the porosity and texture of the surface. However, on moderately smooth surface

COLOURS AVAILABLE

White*
Tintable**

*Acroprime Primer & Sealer is an undercoat

**Can be Tinted

HOW TO APPLY

SURFACE PREPARATION : Ensure that the surface to be painted is free from dirt, dust, rust, oil, grease and foreign matter.

For Interiors: Clean the surface well and remove all loose matter. Apply one or two coats of this primer. Use Rhino Acrylic Wall Putty for interior if necessary to fill the dents and surface imperfections. This should be done after sanding the first coat of primer. If wall putty is used, then one more coat of this Primer is recommended to sandwich the Putty between the two coats of Primer.



For best result allow 4 hours drying between any two coats of primer.

Lightly sand with sand paper No. 320/400 and then apply subsequent coats of finish paint.

For Exteriors: Newly plastered surface should be fully cured and allowed to dry. Ensure that the surface to be painted is free from dirt, dust, grease, and loose paint, algae fungus or any other powdery material and efflorescence etc. Surfaces previously coated with cement paint should be wire brushed, washed thoroughly with water and allowed to dry.

Acroprime exterior primer & sealer should be thinned with water in the proportion of 1:1 by volume and then applied liberally by brush and allowed to dry for (4-6) hours. Top coats, as recommended, should be applied.

PAINT APPLICATION PROCESS

APPLICATION	THINNER	DILUTION % (BY VOLUME)	APPLICATION ¹ VISCOSITY(SEC)	RECOATING PERIOD ² (HOURS)
STEP 1 FIRST COAT ACROPRIME PRIMER & SEALER BRUSH / ROLLER / SPRAY	 WATER	100 %	BRUSH 15 - 18 SPRAY 33	4 HRS
APPLICATION OF PRIMER IS MANDATORY				
STEP 2 SECOND COAT ACROPRIME PRIMER & SEALER BRUSH / ROLLER / SPRAY	 WATER	100 %	BRUSH 20 - 25 SPRAY 20 - 25	4 - 6 HRS

1. As measured through a Ford cup.

2. Recoating period is quoted for 25°C and 50% Relative Humidity, these may vary under different conditions.

3. Some shades may require 3 or more coats for proper hiding.

TECHNICAL DETAILS

a. Drying time: Surface dry time 30 min.

b. Sheen levels: 15 - 35

c. Flash point IS101/1987 Part 1, Sec 6: NA

d. Stability of thinned paint: To be used within 24 hours

PRECAUTIONS

- ❖ Do not apply when ambient temperature is less than 10°C or if the temperature might drop to this level within 4 hours if application.
- ❖ In high humidity areas, use of bio-wash solution is recommended to remove surface fungus growth, fungal spores, mould etc. before application of paint.
- ❖ Tinted paints need through shaking immediately after tinter addition as well as before use.
- ❖ Do not thin before application of Universal Stainer for customized shades.
- ❖ Do not add more than 5% of Universal Stainer.
- ❖ Do not over dilute the paint.
- ❖ Do not add Universal Stainer if being used for Exterior application.

SAFETY FEATURES

- ❖ Kindly refer to the MSDS for Acroprime primer & Sealer which gives detailed information on safety measures while handling the paint.
- ❖ Store the container with the lid tightly closed in an upright position, in a cool, dry place.
- ❖ Keep out of reach of children and away from food, drink etc.
- ❖ May be harmful, if swallowed. In case of ingestion, seek immediate medical attention.
- ❖ Wear eye protection during application. In case of contact with eyes, rinse immediately with plenty of water and seek medical advice.
- ❖ In case of skin contact immediately wash skin with soap and plenty of water. Get medical attention if irritation develops or persists.
- ❖ Do not breathe vapour or spray. It is recommended to wear suitable nose pad during sanding and surface preparation to avoid dust inhalation.
- ❖ Do not pour leftover paint down the drain or in water courses.
- ❖ In the event of spills, contain spillage using sand or earth.
- ❖ Safety Data Sheet available for professional user on request.
- ❖ No added Lead, Mercury or Chromium compounds.