

# Acroplast

## Acrylic Hydroshield Waterproof Putty For Exterior



ACROPLAST is a thin coat surfacing plaster. It is based on High Performance Acrylic Resin, which provides excellent bonding and flexibility to resist slight thermal expansion and contraction of the walls. Being waterproof it prevents water from seeping into the building and causing damage to the walls. Acroplast is designed to be applied over new or existing plasters.

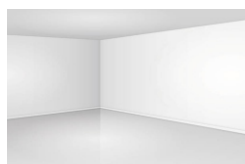
As an Acrylic Hydroshield putty it does not swell or soften when exposed to water.

### PRODUCT BENEFITS



### PRODUCT FEATURES

#### AREAS OF APPLICATION



Exterior & Interior Walls



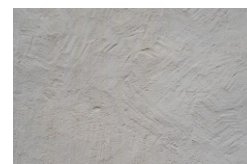
Concrete



Cement Plaster



Concrete Bricks



Mortar Plaster

#### PACKAGING AVAILABLE



Shelf Life: 3 years from date of manufacturing in original tightly closed containers away from direct sunlight and excess heat.

#### FINISH

SMOOTH



MATT



#### COVERAGE



2.2 - 2.7 Sq. mtr. / Kg / Coat\*

(Depending on Substrate surface condition)

\*Actual coverage may vary from the quoted coverage due to factors such as method and conditions of application, surface roughness and porosity.

#### COLOURS AVAILABLE



White\*

\*Acroplast is an undercoat

### HOW TO APPLY

- All surfaces must be sound, clean and free from any oils, grease, loose/ powdery paint, efflorescence, algae, lichen etc.
- All cracks upto 5mm must be filled with our product ACRO CRACK SEAL PASTE and cracks more than 5mm must be filled with cement & sand mix.
- Acroplast Acrylic Putty should be sandwiched between two coats of Acro Primer/Sealer.
- Keep the pack in a dry and clean place, away from the direct sun & heat.
- Apply 1-2 coats of Acroplast Acrylic Putty upto 1 mm each with trowel and allow it to dry for 24 hrs.

## PAINT APPLICATION PROCESS

APPLICATION	THINNER	DILUTION %	APPLICATION VISCOSITY	RECOATING PERIOD
<b>STEP 1</b> <b>PRE WET THE SURFACE</b> (OPTIONAL)	PRE WET THE SURFACE BEFORE APPLICATION OF FIRST COAT OF ACROPLAST PUTTY			
<b>STEP 2</b> <b>FIRST COAT ACROPLAST PUTTY</b> PUTTY BLADE / STEEL TROWEL	 WATER	35% - 40%	N/A	4 - 6 Hrs.
<b>STEP 3</b> <b>SECOND COAT ACROPLAST PUTTY</b> PUTTY BLADE / STEEL TROWEL	 WATER	35% - 40%	N/A	4 - 6 Hrs.

1. Recoating period is quoted for 25°C and 50% Relative Humidity, these may vary under different conditions.

## POST PAINTING CARE

For the best performance of the paint, ensure proper washing and cleaning of all algal and fungal growth, if any, at regular intervals of six months.

## PRECAUTIONS

During extremely hot weather application finished coat shall be cured by sprinkling of water for 1-2 days for best results. Do not apply thick coat (more than 1 mm) in one go.

## UNIQUENESS

The speciality chemicals create a thermo flask in the coating. It thus refract, reflect and dissipate heat. On internal walls it reduces heat loss while on external walls and roofs, it reflects heat from the sun, thus creating a cooler internal environment. It further provides a most durable matrix in the Interiors and Exteriors and is longer lasting and washable too. It has UV Resistance, Excellent color reflection, low VOC as per IGBC / UGBC.

## SAFETY FEATURES

- ❖ Kindly refer to the MSDS for ACROPLAST PUTTY which gives detailed information on safety measures while handling the paint.
- ❖ Store the container with the lid tightly closed in an upright position, in a cool, dry place.
- ❖ Keep out of reach of children and away from food, drink etc.
- ❖ May be harmful, if swallowed. In case of ingestion, seek immediate medical attention.
- ❖ Wear eye protection during application. In case of contact with eyes, rinse immediately with plenty of water and seek medical advice.
- ❖ In case of skin contact immediately wash skin with soap and plenty of water. Get medical attention if irritation develops or persists.
- ❖ Do not breathe vapour or spray. It is recommended to wear suitable nose pad during sanding and surface preparation to avoid dust inhalation.
- ❖ Do not pour leftover paint down the drain or in water courses.
- ❖ In the event of spills, contain spillage using sand or earth.
- ❖ Safety Data Sheet available for professional user on request.
- ❖ No added Lead, Mercury or Chromium compounds.